



COPPER POINT

R E S O R T



A CANADIAN ROCKY MOUNTAIN RESORT

CONFERENCES • RETREATS • BUSINESS MEETINGS • FAMILY EVENTS • WEDDINGS • GROUP BOOKINGS

TABLE OF CONTENTS

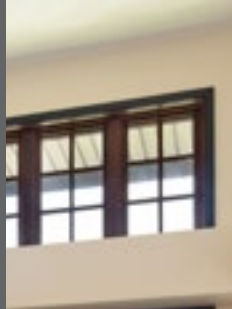
01

RESORT & RETREAT



02

ROOMS WITH A VIEW



04

DINE, RELAX & REGROUP



03

GET TOGETHER





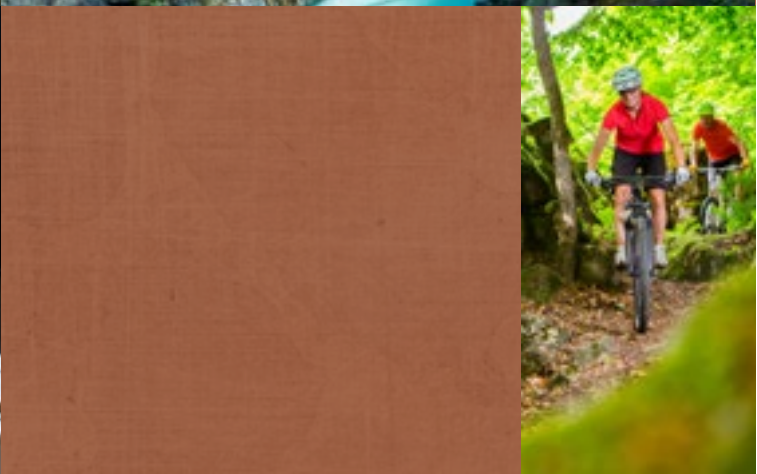
05

RECREATION
DESTINATION



06

ON YOUR
WAY



*An affordable, luxurious resort
located in the pristine Canadian
Rocky Mountains.*



COPPER POINT RESORT

CONFERENCES

RETREATS

BUSINESS MEETINGS

FAMILY EVENTS

WEDDINGS

GROUP BOOKINGS

copperpointresort.com

01 RESORT & RETREAT



RESORT EXTERIOR



POOLDECK AND CABANA

The 179-key Copper Point Resort occupies an enviable location nestled among the Canadian Rockies surrounded by spectacular mountain views and a wide variety of year-round recreational pursuits including incredible lakes and biking, hiking and snowmobiling trails. The Resort sits on a ±6.2 acre site and is distinguished by a 5-storey structure, providing guests with easy access to the Resort's amenities, services and offers great views.

The Resort offers a variety of guest room and suite configurations and has an excellent complement of modern amenities including ±6,600 SF of conference and event facilities with almost ±2,000 SF of outdoor space, a ±6,800 SF full-service restaurant with large patio and poolside Copper Cabana, ±2,700 SF spa, large indoor and outdoor swimming pools and hot tubs, fitness centre, multi-purpose outdoor sports court, Adventure Centre, gift shop, and 102 surface parking stalls and 84 stalls in a heated underground parkade.

- Copper Point Resort was constructed to exceptional standards and is the premium property for meetings, conferences, weddings, business or personal travel.

- The Resort was built with an inviting atmosphere in mind, which is exemplified by the open space design with plenty of natural light.
- The suites are furnished with luxurious finishes including hardwood and slate floors, natural leather sofas, granite countertops, stainless steel appliances, vessel sinks, designer linens and chic decor. King size beds in private rooms and multi-room suites are available as well.
- Standard guest rooms feature one queen bed and include a private balcony, microwave and mini-fridge.
- The suites are large in size ranging from 750 SF to 1,330 SF and feature superb upgraded conveniences including additional beds, a separate living space, sofa bed (for children), full kitchen, breakfast bar, dining room table, in-room washer/dryer, and a glass-encased, fully tiled shower with a rainfall showerhead, among many more amenities.
- A host of facilities and services are also offered at this full-service resort, providing a true destination experience for both leisure and corporate clientele.

PROPERTY SUMMARY

ADDRESS

760 Copper Road, Invermere, BC

GUEST ROOMS AND SUITES

179, including 105 large suites

FOOD AND BEVERAGE

±6,800 SF full-service restaurant with large patio and poolside Copper Cabana

MEETING FACILITIES

±6,600 SF of indoor space, plus additional outdoor spaces including a ±2,000 SF terrace offering stunning views of the neighbouring Copper Point Golf Club

OTHER FACILITIES/ AMENITIES

- 2,700 SF spa
- Large indoor and outdoor swimming pools
- Indoor and outdoor hot tubs
- Poolside cabana
- Fitness centre
- Multi-purpose outdoor sports court
- Adventure Centre
- Gift shop
- 102 surface parking stalls and 84 stalls in a heated underground parkade
- All keys include private balconies



TWO-STOREY RESORT LOBBY



BANQUET FACILITIES

INVERMERE, BC

- Nestled in the Columbia Valley between the Canadian Rockies and the Purcell range, Invermere is a friendly and casual town with a vibrant arts scene and world-class recreation at its doorstep including an abundance of golfing, hiking, boating, skiing and snowmobiling.
- The majority of high-end estate homes within the Columbia Valley are located nearby the Resort making the area an enclave to an affluent population base.
- Invermere is a gateway to the entire Kootenay Rockies tourism region given its convenient central location surrounded by Panorama Mountain Village, Radium Hot Springs, Fairmont Hot Springs and Lussier Hot Springs, among other attractions.
- The Town is a thriving business centre and popular seasonal/vacation home destination, with easy accessibility given its strategic location along Highway 93/95 which connects to other routes from Cranbrook and between Banff and Calgary, approximately 1.5 hours, 2 hours and 3 hours away by car, respectively.
- The Canadian Rockies International Airport (IATA: YXC) located in Cranbrook, BC is the closest airport to Copper Point Resort, and offers direct flights to Vancouver and Calgary with annual passenger volume of over 113,000. Charter flights are also available via the nearby Fairmont Hot Springs Airport.

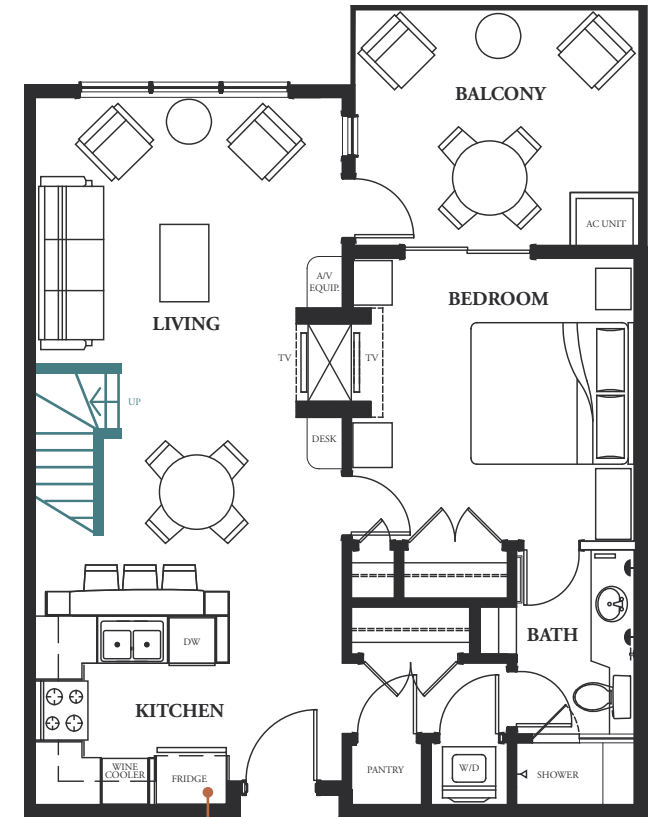
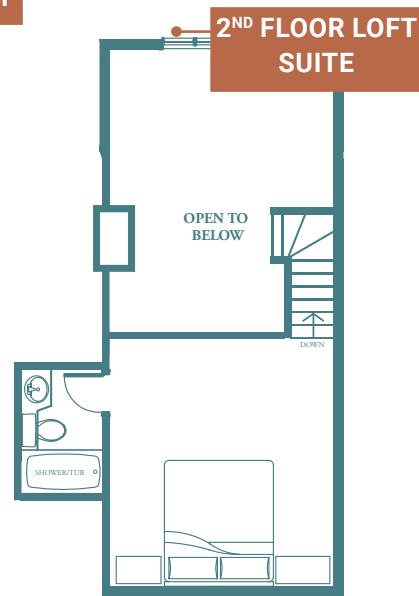
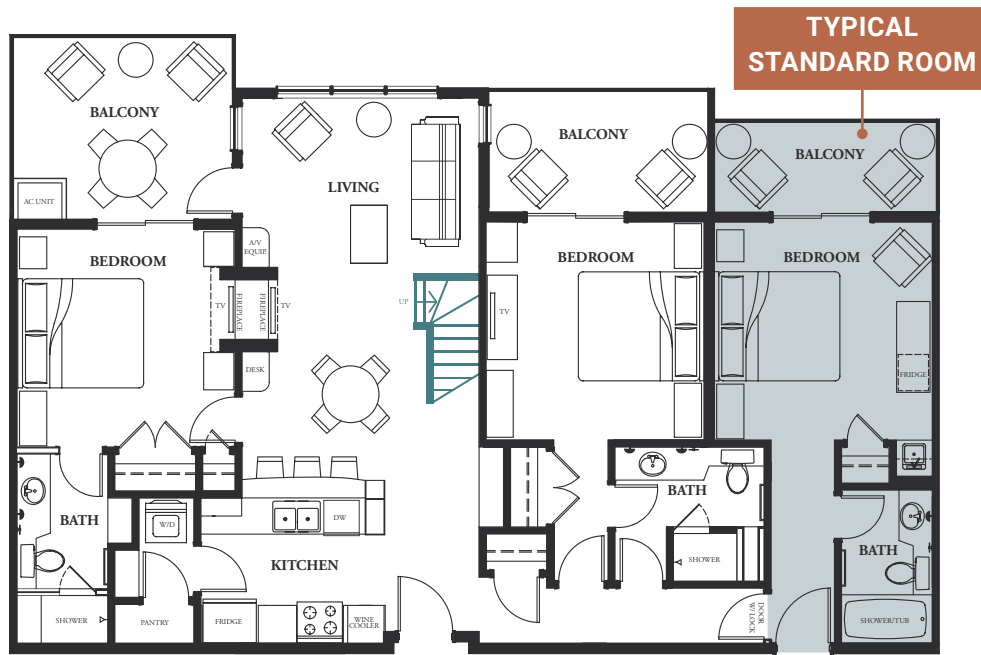
02 ROOMS WITH A VIEW

GUEST ACCOMMODATIONS

The 179-key Copper Point Resort offers five types of room categories with views amidst towering mountains and lush greens. Guest rooms and suites are each well appointed with high-quality furnishings including hardwood and slate floors, granite countertops, stainless steel appliances, private balconies and other standard amenities typical of an upscale full-service resort. Upgraded amenities include a fireplace, extra kitchen space, leather sofa bed (for children), and/or additional bedrooms, among other features.

Listed opposite is a detailed breakdown of guest room types and suites, as well as room descriptions at the Resort. A sample of typical room floor plans are presented below with additional layouts available on request.

| GUEST ROOM MIX | | |
|------------------------|------------|-----------|
| ROOM TYPE | # OF ROOMS | SIZE (SF) |
| Standard Room | 74 | 285 |
| One Bedroom Suite | 47 | 750 |
| One Bedroom Loft Suite | 10 | 980 |
| Two Bedroom Suite | 32 | 1,100 |
| Two Bedroom Loft Suite | 16 | 1,330 |
| Total | 179 | |



Main Suite 1087 - 1091 sq.ft.

Stairs are only in suites with lofts.

Lock Off Suite 298 sq.ft.

Loft Suite 206 sq.ft.

Available on the 4th & 5th floors only.

TYPICAL THREE BEDROOM SUITE

TYPICAL ONE BEDROOM SUITE



STANDARD ROOM

STANDARD ROOMS

Featuring one queen bed, these standard 285 SF rooms are outfitted with a gorgeous vessel sink and granite countertops, luxurious bed linens, and its own private balcony. Rooms are conveniently equipped with a microwave and mini-fridge. Standard rooms are sold as standalone accommodations but also adjoin to create two/three bedroom suites or two/three bedroom loft suites.

ONE BEDROOM SUITE

This beautiful 750 SF suite includes a master bedroom with a king bed, living room with a sofa bed (for children), full kitchen, breakfast bar, dining room table and a washer/dryer, comfortably accommodating two guests and up to two children. The private balcony is equipped with an outdoor electric barbecue and the interior has a cozy electric fireplace. The ensuite bath features a vessel sink and glass-encased, fully tiled shower with rainfall showerhead.

ONE BEDROOM LOFT SUITE

These spacious bi-level 980 SF suites are located on the Resort's top floor and can comfortably accommodate four guests and up to two children. The main level of this suite includes a master bedroom with a king size bed, luxurious ensuite bathroom and spacious living room with a sofa bed (for children). An airy staircase leads to the loft suite, which features a twin trundle bed under vaulted ceilings, flat-screen TV and three-piece bathroom with a tub-shower combo. Additional amenities include a washer/dryer, breakfast bar as well as an electric fireplace and outdoor electric barbecue on the private balcony.

TWO BEDROOM SUITE

These spacious two bedroom suites are 1,100 SF and have hardwood and slate flooring with sofa bed that can accommodate two children. Ideal for groups of four and up to two children, there are two separate bedrooms with one king bed in the master and one queen bed in the second bedroom - each with their own private balcony. The living room is complete with a leather sofa bed, electric fireplace and flat-screen TV, and the upscale full kitchen is equipped with stainless-steel appliances, granite countertops and a breakfast bar. There is also a dining room table, outdoor electric barbecue, two luxurious bathrooms, three flat screen TVs and a washer/dryer.

TWO BEDROOM LOFT SUITE

Located on the Resort's top floor, these spacious bi-level 1,330 SF accommodations are ideally designed for groups of up to six, plus two children. On the main level, there are two bedrooms with one king bed and one queen bed, a living room with a leather sofa bed, two full luxurious bathrooms, three flat-screen TVs and a washer/dryer. An airy staircase leads to the loft suite which enjoys the same layout as the one bedroom loft suite. There is also a full kitchen, fireplace, two private balconies, an outdoor barbecue and other high-end finishes to round off this stylish suite.

ROOM INVENTORY

Standard rooms adjoin to suites to form two or three bedrooms suites. In total there are 179 keys in the Resort's room inventory when standard rooms are sold independently. Sofa beds in all suites can comfortably accommodate two children.



SUITE KITCHEN AND DINING AREA



LOFT SUITE LIVING ROOM



SUITE BEDROOM AND BALCONY



SUITE LIVING ROOM



LUXURIOUS BATH

03 GET TOGETHER

MEETING & BANQUET FACILITIES

The beautiful wide-open space that rims Copper Point Resort is mirrored in its expansive meeting rooms with vaulted ceilings, totalling ±8,600 SF of indoor and outdoor space. Meeting facilities are located on two levels of the Resort and offer golf course views. The Resort has a variety of event and banquet facilities to accommodate small and large conferences, corporate meetings, weddings, training seminars and social events, among others. The Resort also provides full on-site audio/visual equipment and creative catering menu options for event planners, as well as comprehensive team building plans for corporate retreats, and wedding specialists.

The following provides a description of each meeting space, and a capacity chart is located below. Meeting floor plans are also included in this section.

QUARTZ GRAND HALL

The Quartz Grand Hall is the Resort's largest ballroom, spanning 3,300 SF, and can host up to 275 guests for a reception or conference set-up theatre style. This functional space offers plenty of natural lighting, its own foyer and an outdoor 500 SF patio which walks-out onto a beautiful tree and hillside terrain. Located on the Resort's lower lobby level, the Quartz Grand Hall can also be subdivided into three separate private breakout rooms between 700 SF to 1,300 SF in size and capacities from 12 to 185 guests.

AMBER ROOM

Just upstairs from the lobby, this open-concept space has two outdoor balconies overlooking Copper Point Golf Course. The 2,300 SF Amber Room is popular for weddings and social gatherings given its big windows providing plentiful of natural light and obstructed lush green views and accommodates up to 120 guests.

JADE BOARDROOM

This luxurious meeting space is ideal for executive board meetings or exclusive intimate events - with a capacity of 12 guests. The comfortable, high-end furnishings include a leather sectional sofa bed, 63-inch Plasma TV, private outdoor patio, Smart Board, gallery-style kitchen, two washrooms and a billiard table, among other amenities.

OPAL PATIO

This unique meeting space is set outdoors and is an ideal setting for a wedding ceremony or cocktail reception adjacent to the Copper Cabana (see diagram on page 12). The picture-perfect scenery with mountains and manicured fairways captured in each picture-perfect frame are much sought-after.

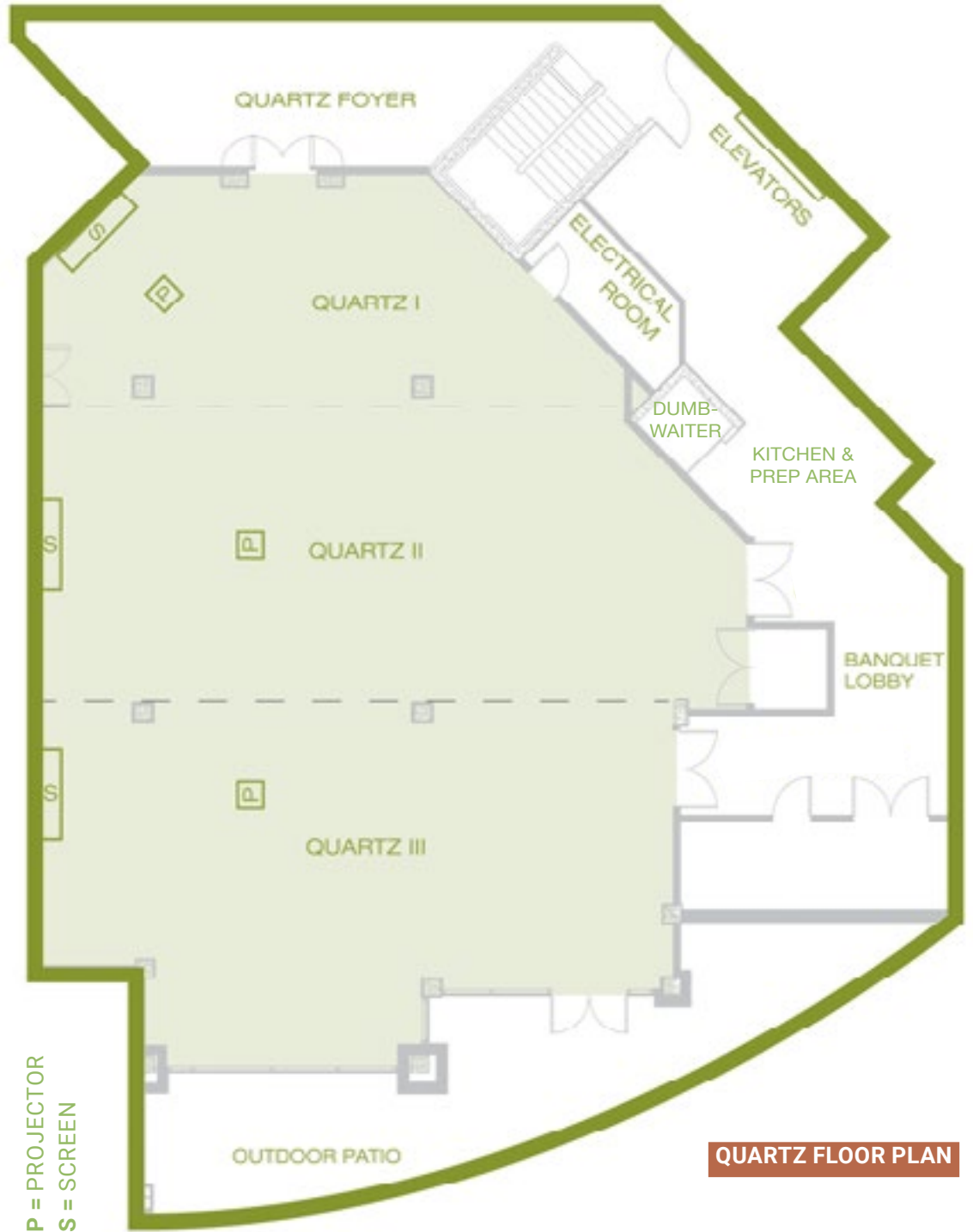


MEETING AND BANQUET FACILITY OVERVIEW

| Room | Size (SF) | Reception | Banquet | Class | Boardroom | U-Shape | Theatre |
|-----------------------------------|--------------|------------|-----------|-----------|-----------|-----------|------------|
| | | | | | | | |
| Quartz Grand Hall | 3,300 | 275 | 200 | 90 | 60 | – | 275 |
| <i>Quartz I</i> | <i>700</i> | <i>50</i> | <i>30</i> | <i>12</i> | <i>18</i> | – | <i>40</i> |
| <i>Quartz II</i> | <i>1,300</i> | <i>125</i> | <i>80</i> | <i>36</i> | <i>40</i> | <i>32</i> | <i>110</i> |
| <i>Quartz III</i> | <i>1,300</i> | <i>125</i> | <i>80</i> | <i>36</i> | <i>40</i> | <i>32</i> | <i>110</i> |
| Amber Room | 2,300 | 180 | 140 | 60 | 46 | 48 | 225 |
| Jade Boardroom | 1,000 | 20 | 20 | – | 12 | – | – |
| Subtotal - Indoor | 6,600 | | | | | | |
| Opal Patio | 2,000 | 170 | 100 | – | – | – | 180 |
| Total Indoor & Outdoor | 8,600 | | | | | | |



QUARTZ BALLROOM



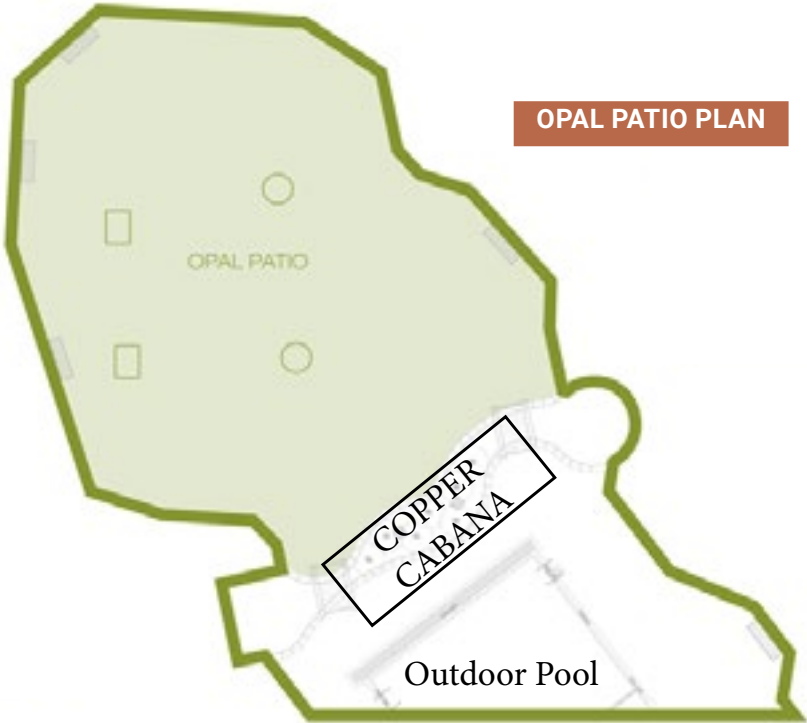
QUARTZ FLOOR PLAN



AMBER BALLROOM



AMBER FLOOR PLAN



OPAL PATIO PLAN



OPAL PATIO



JADE FLOOR PLAN



JADE BOARDROOM

04 DINE, RELAX & REGROUP

FOOD & BEVERAGE

Copper Point Resort is home to a ±6,800 SF full-service restaurant with a large wrap-around outdoor patio and poolside Copper Cabana. A contemporary restaurant with indoor and outdoor seating, Elements Grill and Lounge is a favourite among foodies and the après golf and ski crowd. Offering ultra-fresh seasonal menus with “smart food” and beverage selections, Elements delivers elegance with refreshing simplicity.

Elements is open for breakfast, lunch and dinner daily and also offers a take-out menu, in addition to room service.



SPA

Columbia Valley Spa & Wellness is a boutique spa located within Copper Point Resort. This full-service ±2,700 SF spa offers a variety of wellness treatments to relax, rewind and renew including massage therapy, body and detox treatments, and aesthetics services such as facials, pedicures, manicures, waxing, eyelash/eyebrow tinting/shaping and/or makeup application.

The Spa can also be coupled with weekend getaway trips, bridal parties, corporate groups, fitness enthusiasts and more to create a dynamic event.



SEASONAL OUTDOOR PATIO





ADDITIONAL AMENITIES

- Large indoor and outdoor swimming pools
- One indoor and two outdoor hot tubs
- Copper Cabana poolside bar (open May – September)
- Fitness centre
- Multi-purpose outdoor sports court and playground
- Adventure Centre - concierge desk
- 24/7 gift shop/market
- 102 surface parking stalls and 84 stalls in a heated underground parkade
- Bike rental service
- Stow and Go for skis or golf clubs
- Tesla and electric vehicle charging stations
- Neighbouring golf courses including The Point and The Ridge (located on-site at Copper Point Golf Club)
- Nearby skiing at Panorama Mountain Village, Radium Hot Springs, Fairmont Hot Springs and Lussier Hot Springs



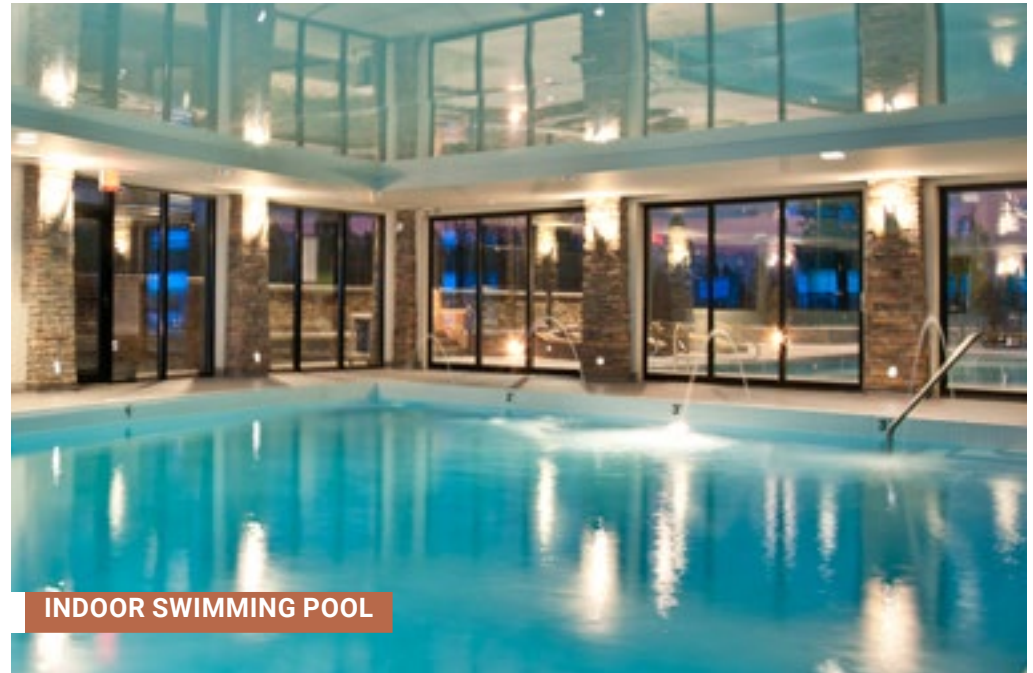
OUTDOOR HOT TUBS



JADE BOARDROOM



ELEMENTS GRILL



INDOOR SWIMMING POOL



COPPER POINT GOLF CLUB

The Copper Point Golf Club, with both The Point Course and The Ridge Course, are among the newest championship courses in the Kootenay Rockies. Carved from the natural beauty of the land, The Point course follows the rise and fall of the Kootenay Rockies. The challenging layout, exquisite views, lush fairways, undulating greens and legendary hospitality have made The Point golf course a must play in the Columbia Valley. The Ridge course takes full advantage of the majestic views and character-filled terrain it's situated on. The innovative design of this Masters-style course features full length Par 3 and Par 4 holes that maintain the perfect blend of playability and challenge. The Ridge will appeal to every level of golfer!



05 RECREATION DESTINATION



A FOUR SEASON RECREATION MECCA

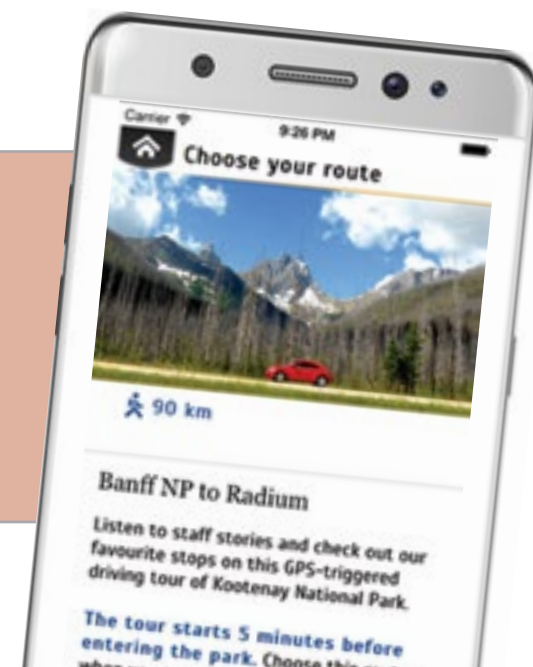
Copper Point Resort is a hidden gem nestled in the Columbia Valley, situated in British Columbia's Kootenay Region. Located adjacent to the Town of Invermere, a community in eastern British Columbia, near the border of Alberta, the Resort is a scenic 3 hour drive from Calgary – Canada's fourth largest City, and proximate the northeast side of Lake Windermere where Cooper Road intersects Highway 93/95 (Kootenay Highway/Banff Windermere Parkway).

Offering spectacular views overlooking two neighbouring golf courses and the Canadian Rockies, Copper Point Resort benefits from its close proximity to many nearby demand generators including eight premier golf courses, endless trails for biking, hiking and snowmobiling, pristine lakes and rivers, as well as amenities such as Panorama Ski Hill, Radium Hot Springs, Fairmont Hot Springs and Lussier Hot Springs.



GO-TO GUIDE

DOWNLOAD the new **Explora Kootenay App** from iTunes or Google Play and enjoy a **guided audio tour** of one of BC's most scenic highways. Hear behind-the-scenes stories from Parks Canada staff and get insider tips on where to stop.





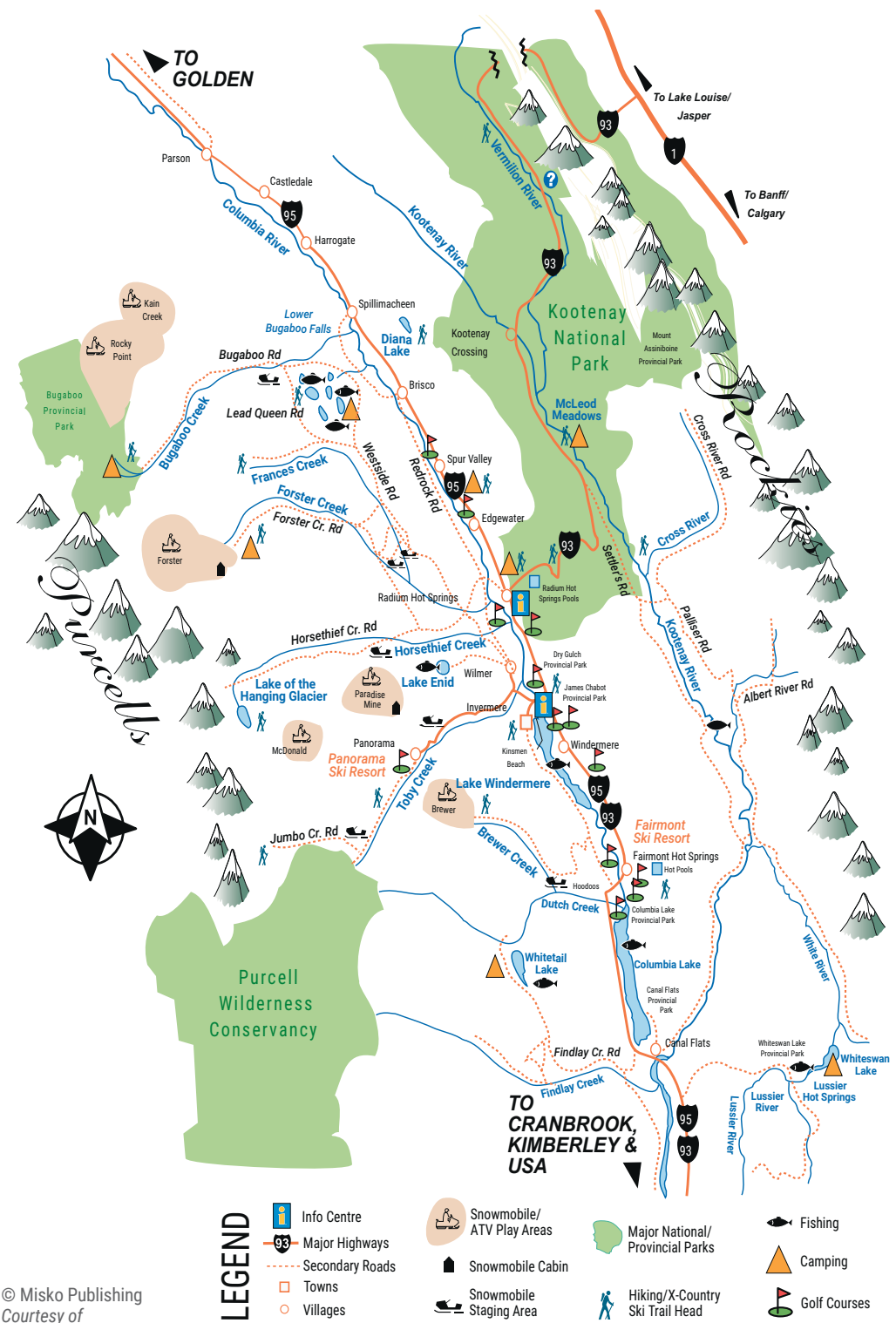
COPPER POINT
RESORT



COPPER POINT
RESORT

POINTS OF INTEREST

- Redstreak restoration area
- Sinclair Canyon & Redwall Fault
- Radium Hot Springs
- Kootenay Valley Viewpoint
- Numa Falls
- The Paint Pots
- Marble Canyon
- The Continental Divide
- The Rockwall
- Fire landscapes (various locations)
- Kootenay Visitor Centre



- LEGEND**
- Info Centre
 - Major Highways
 - Secondary Roads
 - Towns
 - Villages
 - Snowmobile/ATV Play Areas
 - Snowmobile Cabin
 - Snowmobile Staging Area
 - Major National/Provincial Parks
 - Hiking/X-Country Ski Trail Head
 - Fishing
 - Camping
 - Golf Courses

© Misko Publishing
Courtesy of
Aberdeen Publishing and Columbia
Valley Pioneer

05 RECREATION DESTINATION



COLUMBIA VALLEY – A NATURAL PLAYGROUND

Located in the southeastern portion of British Columbia, the Columbia Valley is a pristine region of rivers, lakes, waterfalls, beaches, mineral hot springs, alpine meadows and snow-capped mountains. The region is an epicentre for outdoor recreation being near five of Canada’s national parks (Kootenay, Glacier, Yoho, Mount Revelstoke and Banff) and several championship golf courses, setting the stage for the region as one of Canada’s preeminent destinations for hiking, skiing, mountain biking, golfing, hot springs, boating and snowmobiling.

THE COLUMBIA VALLEY

The Columbia Valley is bordered by the Rocky Mountains to the east and the Purcell Mountains to the west, offering picturesque mountain views with a diverse mix of plant and wildlife. The Valley stretches north-south along the Columbia and Kootenay Rivers to the Town of Canal Flats to the south and the City of Golden to the North. The Columbia Valley is home to several communities including Invermere, but also Panorama Mountain Village, Radium Hot Springs, Fairmont Hot Springs, Lussier Hot Springs, Fort Steele, Cranbrook and Kimberley. The Valley is also known as the “Warmer Side of the Canadian Rockies”, benefiting from warm winters and long summers with the Rocky Mountains shielding the region from arctic air in the winter months, allowing for more enjoyable year-round temperatures.

WORLD CLASS SKIING

The winter months are a major draw for Invermere with several surrounding ski areas along the Kootenay Rockies’ “Powder Highway”, the highest concentration of alpine, backcountry, helicopter, and nordic skiing in the world. Ski resorts within a day trip distance include Panorama, Fairmont Hot Springs, Kicking Horse, Kimberley Alpine Resort and Fernie Alpine Resort offering hundreds of slopes and trails.

Additionally, there are two new ski developments in proximity to Copper Point Resort. Jumbo Glacier Resort will be located at the foot of Jumbo Mountain and Jumbo Glacier, approximately 53 kilometres west of Invermere, and will be the only year round ski resort in North America upon completion, providing lift access to four nearby glaciers at an elevation of over 11,000 feet. Panorama Mountain Resort also recently added 128 acres of new terrain, boasting four Double Black Diamond runs, with further advancements to its ski hills underway.

PROXIMITY TO EIGHT PREMIER GOLF COURSES

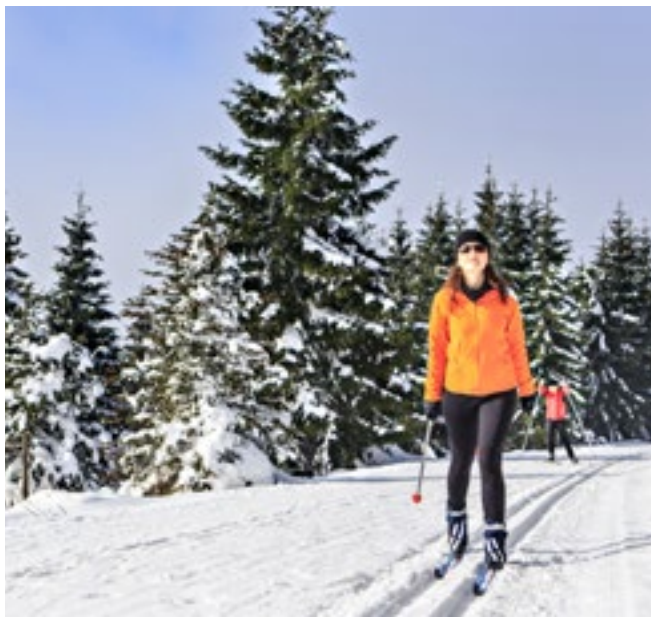
The Resort is located within a short drive to eight world-class golf courses, two of which are adjoining the property –The Point and The Ridge. These famed courses permit the Kootenay Region to be regarded as providing the best golfing in British Columbia and Canada.

RADIUM / FAIRMONT / LUSSIER HOT SPRINGS

In any season, Copper Point Resort is nearby three hot springs including the Radium Hot Springs, Fairmont Hot Springs and Lussier Hot Springs. These soothing and therapeutic mineral-rich pools are located in stunning settings amid canyons, mountains and lush forested wilderness. World famous Radium Hot Springs is Canada's largest, located just 14 kilometres north of the Resort, along Highway 93/95 in Kootenay National Park.



GOLF COURSE & CROSS COUNTRY SKI TRAILS



YEAR-ROUND RECREATIONAL PURSUITS

Surrounded by spectacular natural settings which offer a variety of outdoor activities, bringing thousands of visitors to the Columbia Valley each year. Columbia Lake and Lake Windermere enable several water sports and activities for visitors, in addition to golf, hang-glider off Mt. Swansea, mountain biking, backcountry hiking, snowmobiling and many more recreational pursuits. The local area is also excellent for observing wildlife.

INVERMERE

The Town of Invermere is located 4.0 kilometres west of the Resort and is the primary economic and cultural hub of the Columbia Valley. The majority of high-end estate homes within the Columbia Valley are located nearby the Resort making the area an enclave to an affluent population base. Invermere is situated along the northwest shore of Windermere Lake, a popular destination for visitors and secondary home owners from Calgary. The Town has a full-time population of approximately 4,000 people which surges in the height of the summer tourism season.

TRANSPORTATION

Invermere is located along Highway 93/95 and is easily accessible by a network of highways from both British Columbia and Alberta. The closest major city is Calgary which is an approximate three hour drive northeast along Highway 93/95 and the Trans Canada Highway, providing easy access to a source market of nearly 1.5 million people. Traveling west by road, Highway 95 connects with the Trans Canada Highway for access to other population centres including Revelstoke, Salmon Arm, Kamloops, Kelowna (via Highway 97) and the Metro Vancouver Area.

Air travel visitors can arrive through the Calgary International Airport (IATA: YYC) which serviced nearly 16 million passengers in 2016 as well as the Canadian Rockies International Airport in Cranbrook (approximate 1.5 hour drive). Invermere and Fairmont Hot Springs both have small airports that are used by private and chartered aircraft.

06 ON YOUR WAY

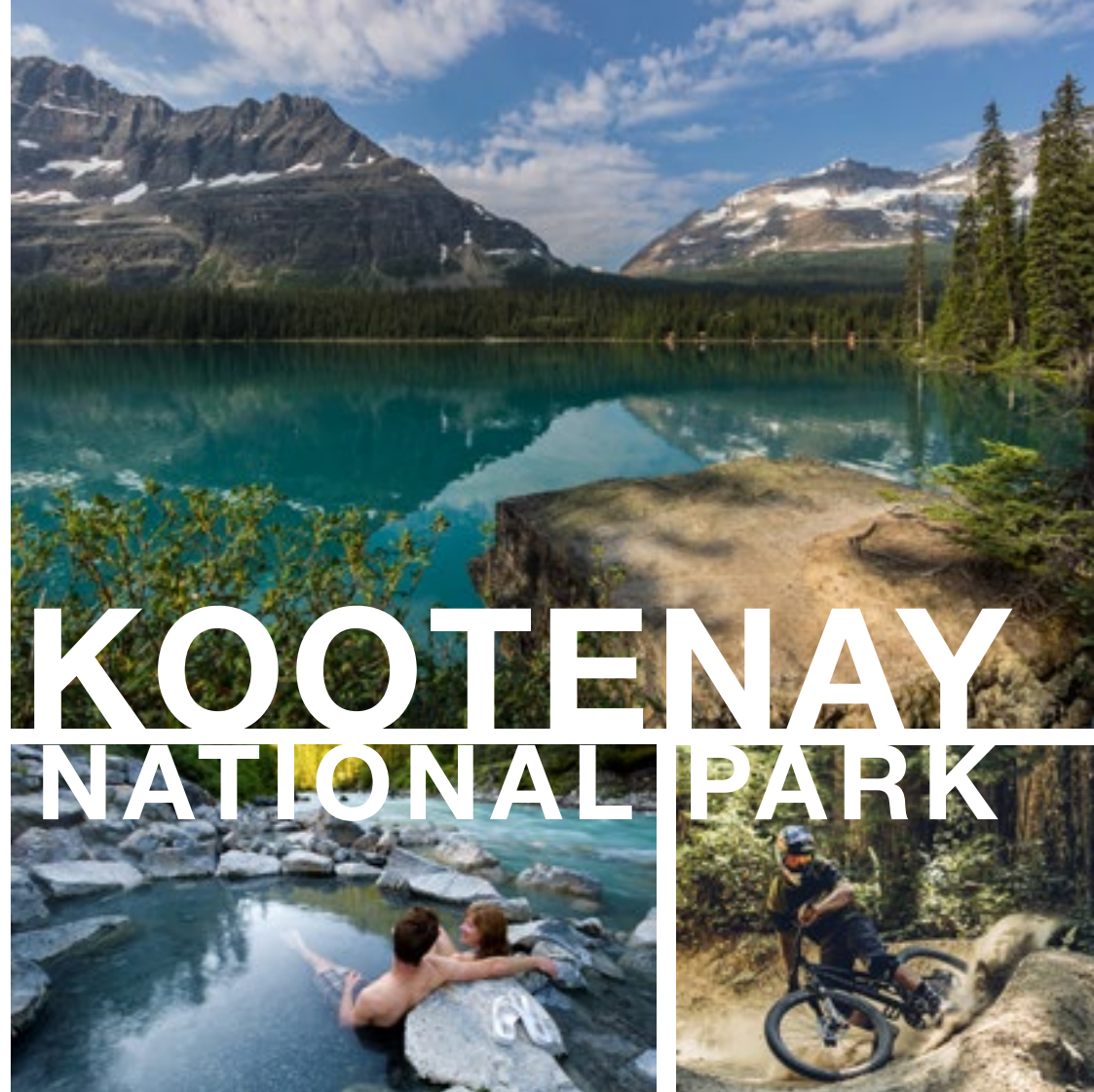
UNLIMITED ADVENTURES

Covering more than 1,400 square kilometres, Kootenay National Park is located north of the Resort along Highway 93/95 and is one of the four continuous mountain parks in the Canadian Rockies with the others being Banff National Park, Yoho National Park and Jasper National Park. The Park is a major demand generator with main attractions including Radium Hot Springs, Fairmont Hot Springs, Lussier Hot Springs, Olive Lake, Marble Canyon and Sinclair Canyon.

| NEARBY NATIONAL & PROVINCIAL PARKS | Distance from Copper Point Resort | |
|--|-----------------------------------|-------|
| | Kilometres | Miles |
| Kootenay National Park | 15 | 9 |
| Whiteswan Lake Provincial Park | 74 | 46 |
| Wasa Lake Provincial Park | 92 | 57 |
| Banff National Park | 108 | 67 |
| Yoho National Park | 145 | 90 |
| Glacier National Park (within the USA) | 175 | 109 |
| Mount Revelstoke National Park | 265 | 165 |
| Kokanee Glacier Provincial Park | 387 | 240 |

Note: Includes only National and Provincial parks accessible by car.

Source: Google.



Visitors have been exploring Kootenay National Park by car since 1923, when the Banff-Windermere Highway first opened. Today, the 94-kilometre drive through the park reconnects you with history as Highway 93 twists and turns through valleys and over two mountain passes.

There is so much to see along the way, you can't help but get out and stretch your legs! Check out some of the key stops along the way. You might want to:

- Stand on the **Continental Divide** – the point from which water flows to both the Pacific and Atlantic oceans.
- Stroll the 0.5 km **Fireweed Trail** and discover how fire renews forests.
- Hike the amazing trail of fire and ice on the 8.4 km journey to **Stanley Glacier** (3 hours return). There are also many other well used trails along the way if this one isn't right for you. And each of them has parking right off the highway, rest rooms and picnic areas to make your stop as comfortable as possible.
- Admire the dramatic colours and sounds of **Marble Canyon's** deep carved chasms as this trail criss-crosses the narrow gorge and takes you into the heart of a recent wildfire. Relax in Kootenay National Park's new red chairs and snap a selfie to share with your friends and family.

- Bask in the sun and linger at Numa Creek or Vermilion Crossing day use areas for a picnic lunch or snack break. And listen to the power of the Vermilion River as it flows towards the Pacific Ocean and grows as well at every stop along the way.

- Keep your binoculars ready! Wildlife such as bears, deer, wolves and bighorn sheep can sometimes be spotted along the highway.

- Enjoy breath-taking views of the Mitchell and Vermilion ranges from the **Kootenay Valley Viewpoint**.

- Get a bird's eye view of Sinclair Canyon on the 6 km return hike along the **Juniper / Sinclair trail**.

- Look up at the towering red cliffs of the **Redwall Fault** in Sinclair Canyon and don't forget to #sharethechair as you relax in the new red chairs located on the bench across from the Radium Hot Spring pools.

- Get out your swimsuits, relax and enjoy a refreshing dip in the **Radium Hot Springs** pools before you check out the village of Radium Hot Springs or continue on your way to Copper Point Resort.



DOWNLOAD the **Explora Kootenay App** from iTunes or Google Play for a guided audio tour.



“A beautiful mountain retreat – perfectly suited for meetings, conferences, weddings or a gathering place for friends and family.”



COPPER POINT

RESORT

Call 1 (855) 926-7737 – book today!

CONFERENCES • RETREATS • BUSINESS MEETINGS • FAMILY EVENTS • WEDDINGS • GROUP BOOKINGS

INVERMERE, BRITISH COLUMBIA, CANADA

COPPERPOINTRESORT.COM